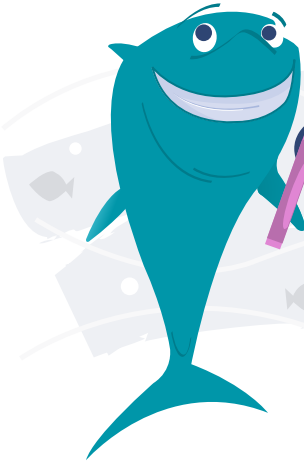


About This Activity

Grab your crayons and color your way to success! Complete this worksheet by first choosing 5 crayons. Color each of the first 5 whole notes with a different color. Then complete this worksheet by naming each note correctly, and by coloring each note the same color as it was colored at the top of the worksheet. Example: Each C is blue, each D is red, etc.

Bass Clef (F Clef)/G Position



COLOR THAT NOTE!

A musical staff with a bass clef and five whole notes. Below the notes are the letters G, A, B, C, and D.

A musical staff with a bass clef and ten whole notes. Below the staff are ten horizontal lines for writing.

A musical staff with a bass clef and ten whole notes. Below the staff are ten horizontal lines for writing.

A musical staff with a bass clef and ten whole notes. Below the staff are ten horizontal lines for writing.

A musical staff with a bass clef and ten whole notes. Below the staff are ten horizontal lines for writing.

